



www.schildr.global



URBAN

GUILLOTINE COMPACT

Urban with
Guillotine Compact
Vertical Sliding Door/Window

Thermal break Aluminum profile



LIFT & SLIDE DOORS

Urban with
Lift & Slide Doors
Maximum Insulation

Thermal break Aluminum profile



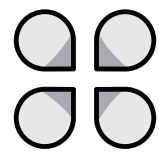
DOUBLE-GLAZED SLIDING DOOR

Urban with
WD240-Sliding Doors
Maximum Functionality



SINGLE GLAZED SLIDING DOOR

Urban with
WS100-Sliding Doors
Minimum obstruction



All Seasons



Resists bad
weather



Fire
retardant



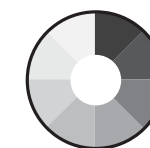
Partial
blackout



Dimmable
LED lights



Light remote
controlled

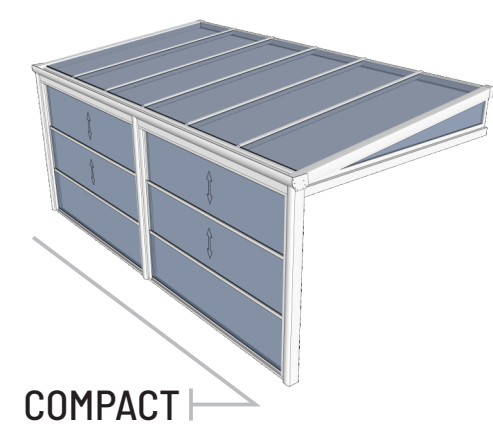


Custom
finishes

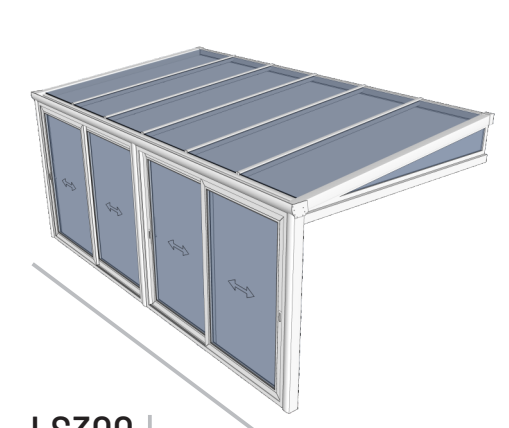


Built
to last

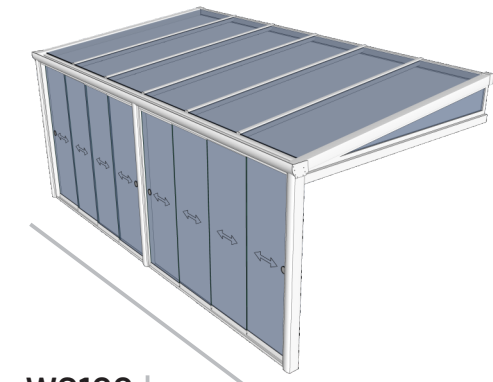
Enjoy the outdoor in the harshest of the weather conditions. URBAN is sunroom with minimum footprint thanks to its structural parts engineered to be minimal in size and to provide least possible obstruction.



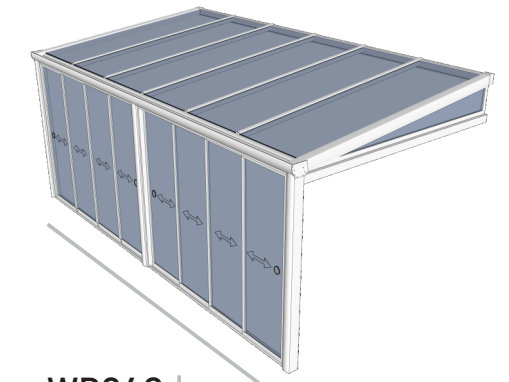
COMPACT



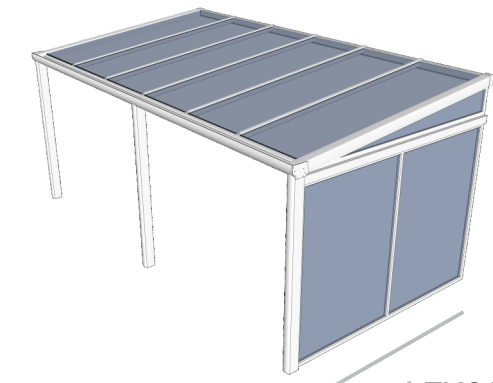
LS300



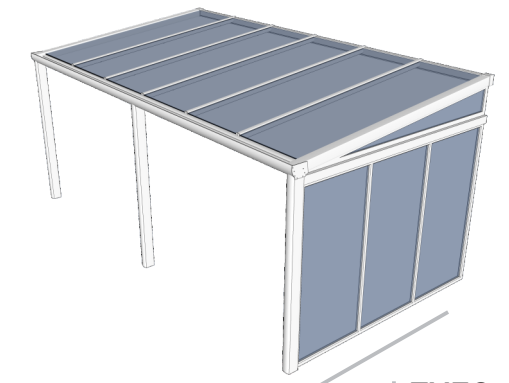
WS100



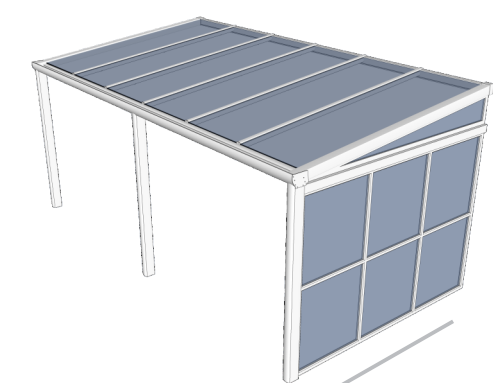
WD240



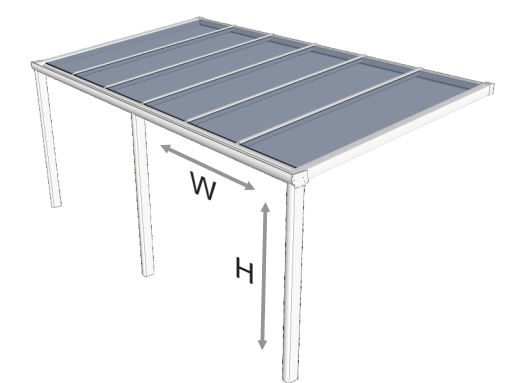
FX20



FX30



FX60



URBAN Assembled in the USA

Sunroom URBAN is all around glass enclosure addition applicable for residential and commercial buildings. It's designed to provide the privilege of enjoying the beauty of outdoors without being affected by the weather elements. Turn your outdoor space into an all season outdoor space. Available multiple glass side enclosure systems make URBAN to fit and match any existing design.

Without any additional steel structure:

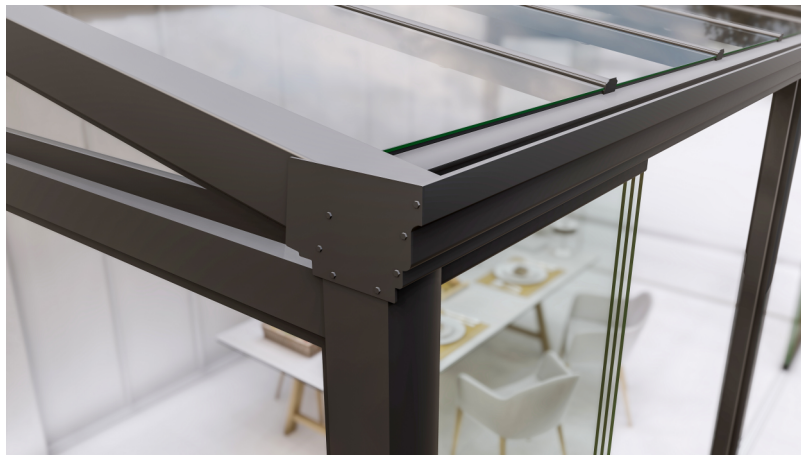
- Up to 11' projection
- No restriction on width
- Can be attached to existing building

Additional Features:

- Built in gutters
- Front posts with hidden downspouts
- 5/8" Clear Multi-wall polycarbonate
- 5/8" Frosted Multi-wall polycarbonate
- 3/8" Tempered glass (Optional LowE)
- Optional Roof Sunshade

APPLICATION

Sunroom, Wintergarden, Decks, Patios, Rooftop



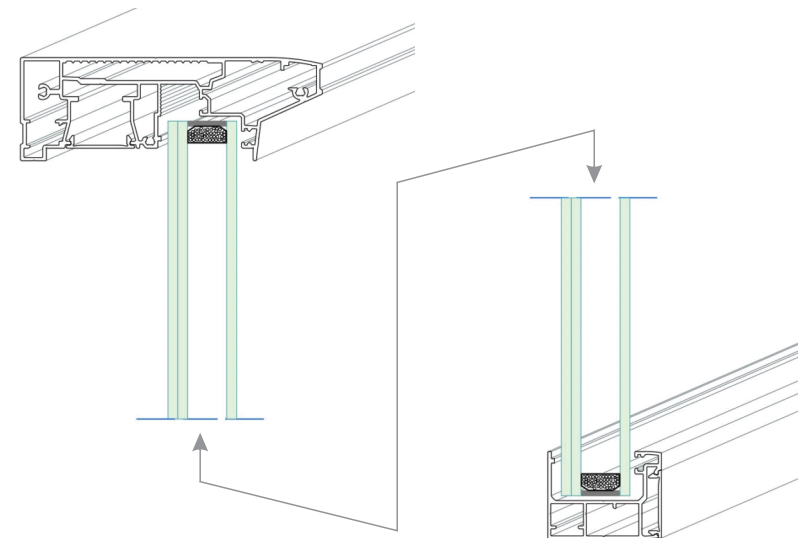
SUNROOM URBAN CLASSIC



OPTIONAL GLASS RAILING

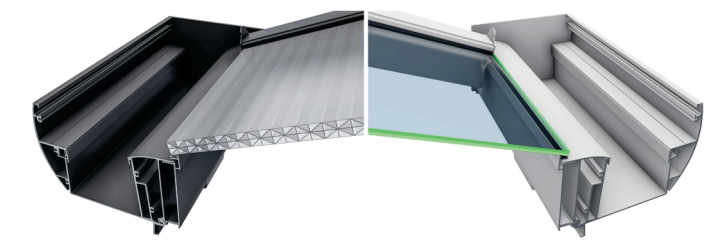


SUNROOM URBAN MODERN

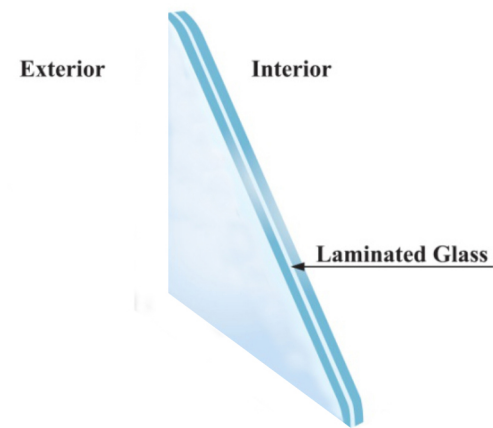


POLYCARBONATE TECHNICS DETAIL:

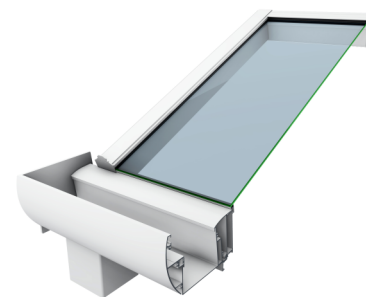
Area weight 2.25 kg/m²
 Sheet width 980, 1,200 and 2,100 mm
 Possible delivery lengths 2,000 to 15,000 mm
 Minimum permissible cold-bending radius (1) 2,400 mm
 Light transmittance D65 clear 1099: ca. 70 %
 (UV-absorbing) white 1146: ca. 55 %
 IQ-Relax: ca. 47 % bronze 1845: ca. 26 %
 Total energy transmission g clear 1099: ca. 62 % white 1146: ca. 54 %
 IQ-Relax: ca. 44 % bronze 1845: ca. 45 %
 Heat transfer coefficient Ug (3) 2.0 W/m² K (vertical application)
 2,1 W/m² K (horizontal application)
 Coefficient of thermal expansion 0.065 mm/m °C
 Possible expansion due to heat and moisture 3 mm/m
 Max. service temperature without load 120°C
 Weighted sound reduction index ~ 21 dB
 Fire rating (2)
 Europe clear 1099, white 1146 B-s1, d0 (EN 13501-1)



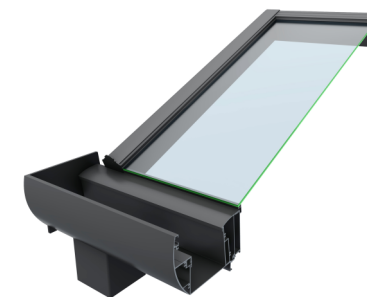
POLYCARBONATE / GLASS



ALL GLASSES ARE TEMPERED



URBAN / WHITE
 Standard frame color /ral 9010
 textured (pulver) white



URBAN / ANTHRACITE
 Standard frame color /ral 7016
 textured (pulver) gray anthracite



URBAN / WOOD FINISH
 Wood finsh and other ral colors
 available upon special request

